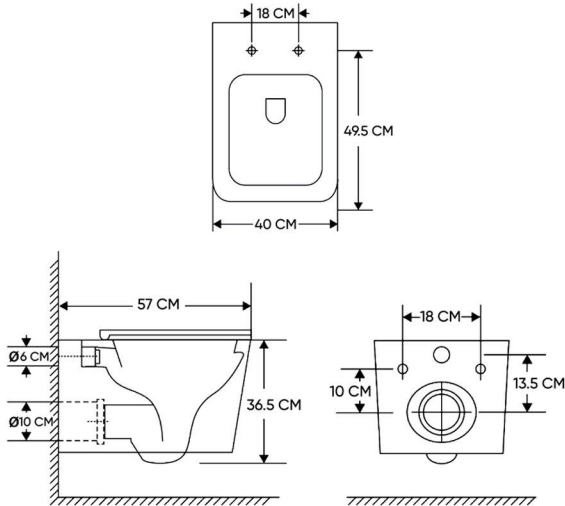


## HATCH WALL-HUNG TOILET SEAT

**Product Name:** SALIX WALL-HUNG TOILET SEAT  
**Model Number:** HAT-TL140E



### AVAILABLE COLORS:



### DESCRIPTION

Wall-Hung Toilet with Seat Cover  
Collection: Salix  
Shape: Rectangular

### DIMENSION

57 x 36.5 x 40 cm

### TECHNICAL SPECIFICATION

Material: Main Body - Vitreous China.  
Seat Cover: UF (Soft Close)  
Flushing Platform: Tornado  
Accessories: Plastic and Stainless Steel (SUS 304)  
Installation Type: Wall-Hung P-Trap.  
Water Consumption: 3.6 L / M.  
Packaging Unit: 1 Pc.  
Net Weight: 29.75 K.G.  
Toilet Seat Weight Limits: 200 K.G.  
Distance between fixing screws holes: 18 cm  
Compatibility: Compatible with Concealed Cistern

### APPLICATIONS

Bathroom

### BOX COMPONENTS

- Wall-Hung Toilet Seat
- Seat Cover with Fixing Screws
- Wall-Hung Toilet Pad
- Conceal fixing screw-iron
- Installation Manual

### WARRANTY

10 Years For the Toilet  
5 Years For the Seat Cover

### COUNTRY OF ORIGIN

Made in China for HATCH Sanitary



hatch-products.com

### HATCH SANITARY

Hatch Sanitary is a trademark owned by MHG

Old Al Kharj Road, Building No. 3533  
Riyadh 14511 - 8305  
Kingdom of Saudi Arabia

@ info.mhg@marketing-home.com

☎ 800 122 2230