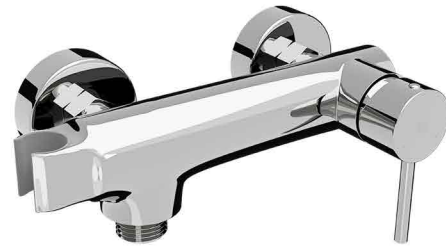
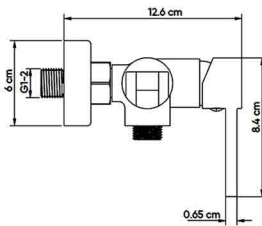
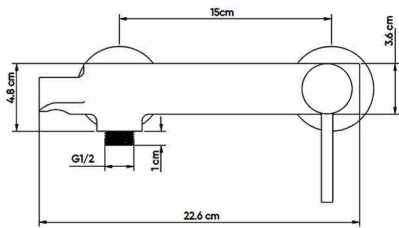


HATCH EXPOSED MIXERS

Product Name: EXPOSED SHATTAF / SHOWER MIXER
Model Number: HAT-MX055



AGAINST MANUFACTURING DEFECTS



SERVICE & ACCESSORIES

AVAILABLE COLORS



GLOSSY CHROME
SW-60196802



MATTE BLACK
SW-60196803



BRUSHED NICKEL
SW-60196804



GLOSSY GOLD
SW-60196805



BRUSHED GOLD
SW-60196806



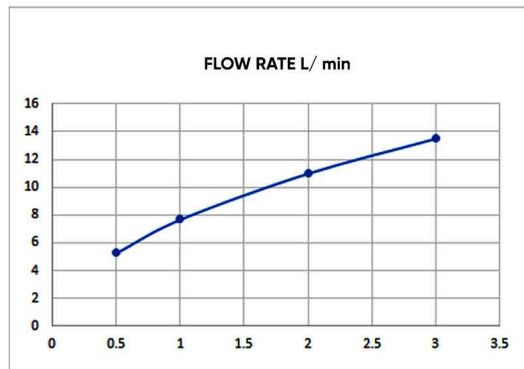
BLACK TITANIUM
SW-60196807

DESCRIPTIONS

Material: Brass main body, frame material: Stainless steel (SUS 304)
Shape: Round
Packaging unit: 1 piece

TECHNICAL SPECIFICATION

Average Flow rate: 13.5 L/min
 Maximum operating pressure: 15 bar
 Mounting type: Exposed
 Connection size: G 1/2 in
 Decorative ring thickness: 0.8 mm
 Ceramic cartridge
 Non-return valve: Yes
 Non-scratch protector
 Distance between water supply hole: ± 12 mm
 Uses as: Shattaf Mixer and Shower Mixer



DIMENSIONS

22.6 x 12.6 x 8.4 CM

APPLICATIONS

Bathroom

BOX COMPONENTS

- Brass Mixer
- Handle
- (SUS 304) Frame
- (SUS 304) S-union sets
- (SUS 304) Screws
- Silicon & Rubber
- Non-return valve
- Allen key

COUNTRY OF ORIGIN

Made in China for HATCH Sanitary

WARRANTY

7 years against manufacturing defects
 2 years for service and accessories



hatch-products.com

HATCH SANITARY

Hatch Sanitary is a trademark owned by MHG

Old Al Kharj Road, Building No. 3533
 Riyadh 14511 - 8305
 Kingdom of Saudi Arabia

© info.mhg@marketing-home.com

☎ 800 122 2230