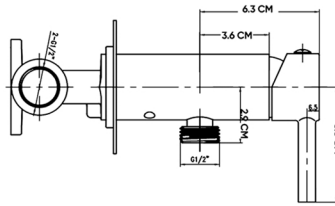
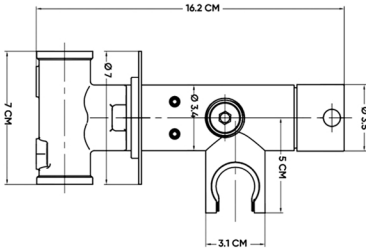


HATCH SHATTAF MIXERS

Product Name: SHATTAF WALL MIXER
Model Number: HAT-MX003



AVAILABLE COLORS



GLOSSY CHROME
SW01330008



MATTE BLACK
SW01330402



BRUSHED NICKEL
SW01330401



GLOSSY GOLD
SW-01720033



BRUSHED GOLD
SW-01720034



BLACK TITANIUM
SW-01720035

DESCRIPTIONS

Wall-Mounted Shattaf Mixer

Material: Main body, Concealed Mixer: Brass, Frame: Stainless steel (SUS 304)

Shape: Round

Packaging unit: 1 piece

TECHNICAL SPECIFICATION

Flow rate at 3 bar: 12 L/min

Maximum operating pressure: 15 bar

Minimum operating pressure: 1 bar

Ceramic cartridge: 25 MM

With a Brass non-return valve: Yes

Installation type: Wall-mounted

Water inlet/outlet: G 1/2 in

With embossed box, Easy to install

Non-scratch holder for shattaf: Yes

DIMENSIONS

H 16.2 x W 7 x D 3.5 CM

APPLICATIONS

Bathroom

BOX COMPONENTS

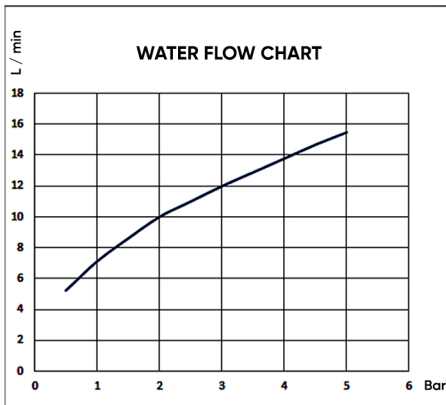
- Handle
- Concealed Mixer with Protection box
- (SUS 304) Frame
- (SUS 304) Screws
- Fischer wall plug set
- Brass Extension set (Hot & Cold)
- Mounting Rings
- Allen key

COUNTRY OF ORIGIN

Made in China for HATCH Sanitary

WARRANTY

7 years against manufacturing defects
 2 years for mechanical parts



HATCH SANITARY

Hatch Sanitary is a trademark owned by MHG

Old Al Kharj Road, Building No. 3533
 Riyadh 14511 - 8305
 Kingdom of Saudi Arabia

© info.mhg@marketing-home.com

☎ 800 122 2230