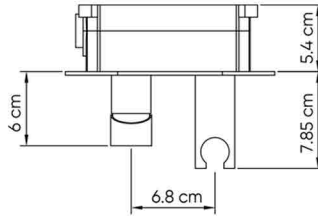
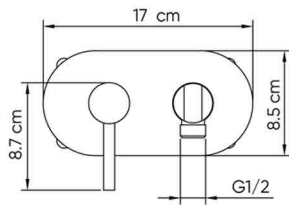


HATCH SHATTAF MIXERS

Product Name: WALL-MOUNTED SHATTAF MIXER
Model Number: HAT-MX001



CONCEALED MIXER



MIXER ACCESSORIES,
MECHANICAL PARTS
AND SURFACE

AVAILABLE COLORS



GLOSSY CHROME
SW-01330006



MATTE BLACK
SW-01720025



BRUSHED NICKEL
SW-01720024



GLOSSY GOLD
SW-01720026



BRUSHED GOLD
SW-01720027



BLACK TITANIUM
SW-01720028

DESCRIPTIONS

Wall-Mounted Shattaf Mixer

Material: Main body, Concealed Mixer: Brass, Frame: Stainless steel (SUS 304)

Shape: Round

Packaging unit: 1 piece

DIMENSIONS

17 x 8.5 x 7.85 CM

TECHNICAL SPECIFICATION

Maximum Flow rate at 3 bar: 12 L/min

Maximum operating pressure: 15 bar

Minimum operating pressure: 1 bar

Ceramic cartridge

With a Brass non-return valve: Yes

Installation type: Wall-mounted

Water inlet/outlet: G 1/2 in

With embodied box, Easy to install

Non-scratch holder for shattaf: Yes

APPLICATIONS

Bathroom

BOX COMPONENTS

- Handle
- Concealed Mixer with Protection box
- (SUS 304) Frame
- (SUS 304) Screws
- Fischer wall plug set
- Mounting Rings & Rubbers
- Allen key

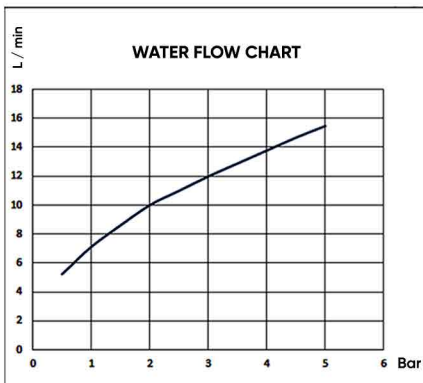
COUNTRY OF ORIGIN

Made in China for HATCH Sanitary

WARRANTY

7 years for concealed mixer

2 years for mixer accessories, mechanical parts and surface



hatch-products.com

HATCH SANITARY

Hatch Sanitary is a trademark owned by MHG

Old Al Kharj Road, Building No. 3533
Riyadh 14511 - 8305
Kingdom of Saudi Arabia

info.mhg@marketing-home.com

800 122 2230